

Personal Particulars Form



<https://go.gov.sg/2023sec45evgss>

Dear students, do key in your personal particulars. Thank you.

Release of 2023 GCE 'N' Level Results



**CARING LEADER
THINKING CITIZEN**



OFFICIAL (CLOSED) \ NON-SENSITIVE

AGENDA

1. Welcome back, Class of 2023!
2. Administration
3. Progression Pathways
4. What's next?
5. Release of N Level Results



Release of 2023 GCE 'N' Level Results



**CARING LEADER
THINKING CITIZEN**



OFFICIAL (CLOSED) \ NON-SENSITIVE

CLASS OF 2023



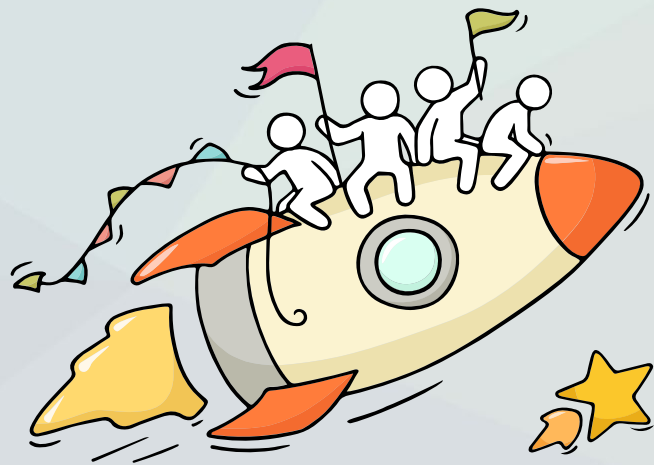
WELCOME BACK!

OFFICAL (CLOSED) \ NON-SENSITIVE



CELEBRATE!

You have worked hard to reach this stage. Let's celebrate your efforts!

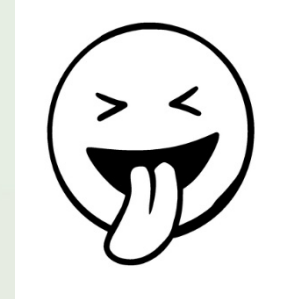
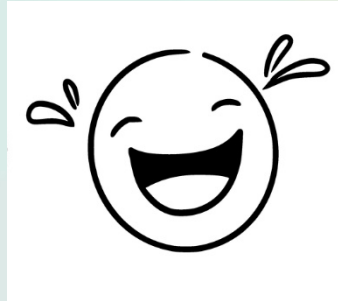
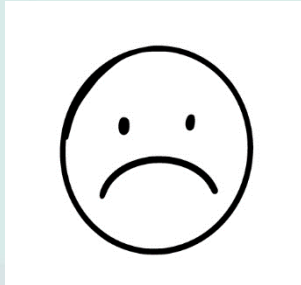


Finally, we are going to get our results!

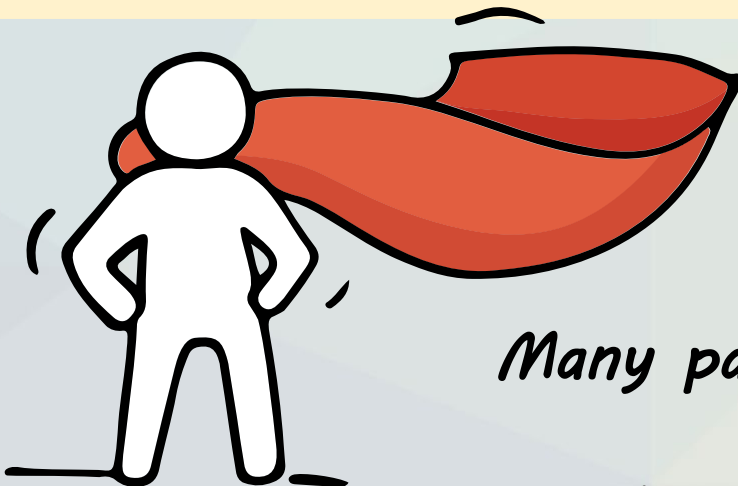


THINK OPPORTUNITIES!

As you await your GCE N-Level results, there are some possibilities:



Remember that **everyone's learning journey is different** but **we can each have a fulfilling outcome!**



Many pathways and opportunities!

NEXT STEPS?

Consider these questions!

Where do I want to go?

Who am I?



How Do I Get There?

Resources to help you make informed decisions



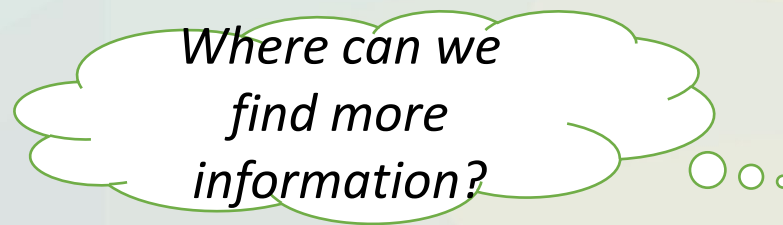
MySkillsFuture Student Portal

A one-stop portal that empowers you to embark on a journey of self-discovery and make informed education and career choices.

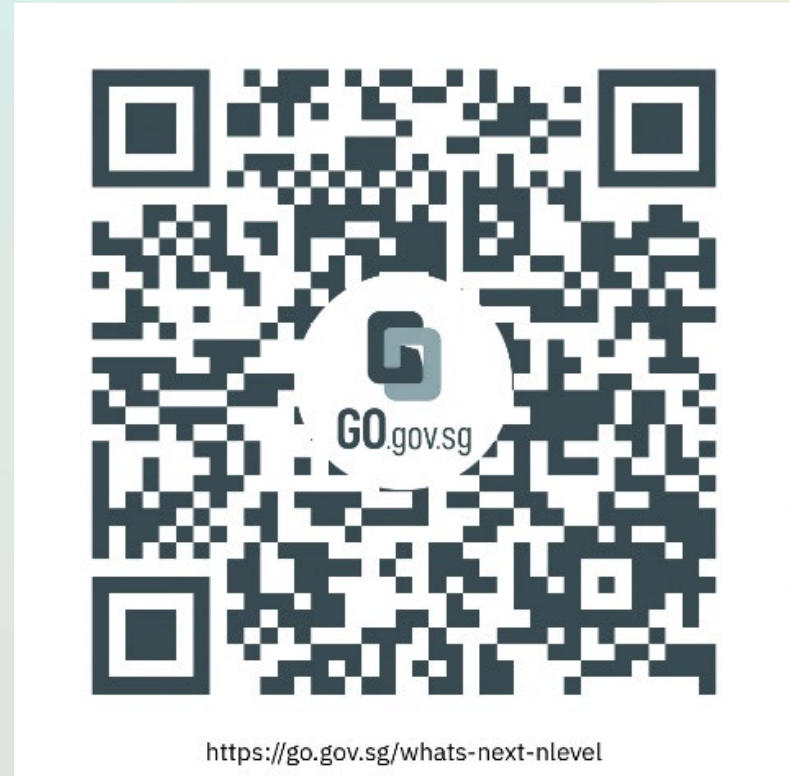
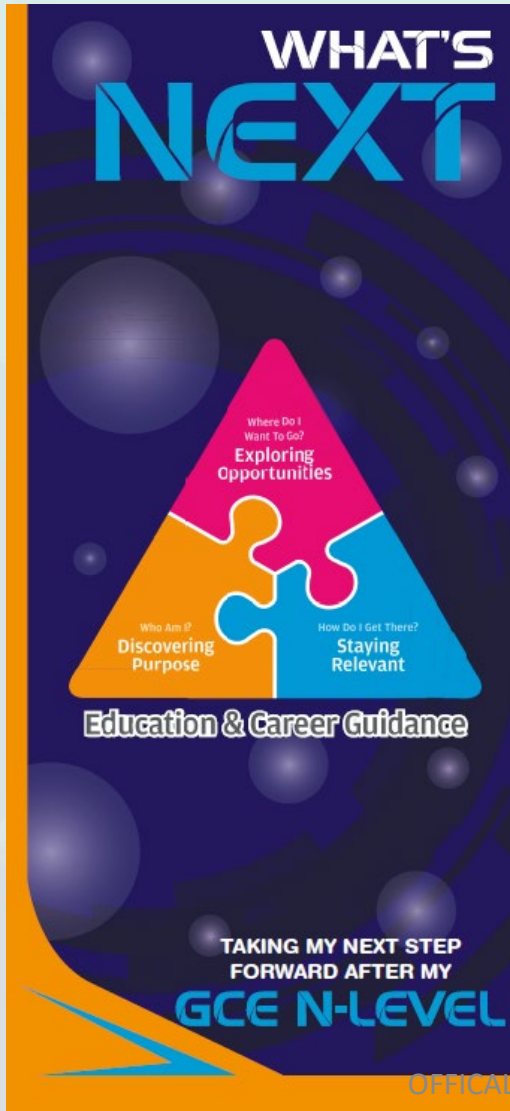
Use the information and tools to explore various education and career pathways and take charge of your future.



<https://go.gov.sg/mySFsec>



Resources to help you make informed decisions



<https://go.gov.sg/whats-next-nlevel>

Resources to help you make informed decisions

Post-Secondary Education

Learn more about the admissions exercises and programmes



<https://moe.gov.sg/post-secondary/admissions>

Learn more about the post-secondary education institutions



<https://moe.gov.sg/post-secondary/overview>

Resources to help you make informed decisions

Explore different jobs and industries with On My Way (OMW). Find out if your career goal and educational pathway match your interests, values and ambitions. <https://www.nyc.gov.sg/omw/home>



KNOW IT ALL

provides consolidated information about different jobs and industries - key responsibilities, skills, career paths and more!



A Day in the Life of a Food Technologist

DAY IN THE LIFE

takes you into the lives of different professionals and give you a glimpse of their jobs and what it entails through the medium of videos.



TASTER PROGRAMMES

are micro-experiences of different job roles that allow you to get a taste of working life and help you decide what to study to achieve your career aspirations!



Concerned about your next steps?

Stop

- Calm yourself down. Take a few deep breaths.

Think

- Think through the different options that are available for you. Keep things in perspective.
- Remember that the N-Level is one part of your life journey and not the destination.

Do

- Approach a trusted adult and seek his/her help. Have a conversation with this person about what would be best for you.
- Make a decision and take action based on your options.

When you receive your results, you may experience a range of emotions.

Managing these emotions well will allow you to stay calm and make rational decisions.

Reaching out for help is a sign of strength, not weakness.

If you have any questions about your options or are not coping well, do reach out to someone you trust and speak with them. It could be a parent/guardian, teacher, ECG Counsellor, School Counsellor or a friend that you can talk to.



Support is readily available for you

Reach out to an ECG Counsellor!

Who can we go
to for ECG
advice?

li_Minnyi@moe.edu.sg

Tuesdays & Thursdays,
8.30am – 6pm



<https://go.gov.sg/ecgevergreen>



Support is readily available for you

Reach out to an ECG Counsellor!

Who can we go
to for ECG
advice?

Make an ECG counselling
appointment via the
ECG Centre @ MOE (Grange Road)
at
<https://go.gov.sg/moe-ecg-centre>



Support is readily available for you

There are other hotlines and chats available if you are more comfortable seeking help using these platforms. Scan the QR code below for a helpful resource.



SOS provides round-the-clock emotional support for those in distress, thinking of suicide or affected by suicide.
Call: **1767** (24-hour helpline) Whatsapp: **9151 1767** (24-hour Care Text)

TOUCHline is a helpline to provide youths with emotional support and practical advice.

Call: **1800-377 2252**
Monday- Friday (Excluding Public Holidays):
9am – 6pm

Community Health Assessment Team (CHAT) provides personalised and confidential mental health checks and consultation for youths. To speak with a youth support worker, you can:

Visit: **CHAT Hub at *SCAPE, #05-05**
Call: **6493 6500/ 6501**
Email: **CHAT@mentalhealth.sg**

Carey is an online platform by Care Corner that provides free mental health check-ins with mental health professionals. Find out more at:
<https://carey.carecorner.org.sg/>


eC2 is an e-Counselling Centre where you can talk to a trained counsellor about the issues you are facing, right where you are.

Chat with a counsellor at:
www.ec2.sg
Monday – Friday (Excluding Public Holidays):
10am – 12pm & 2pm – 5pm

mindline.sg is an online platform that provides tools, tips and resources to help you manage your health and well-being. Find out more at:
www.mindline.sg



Keep a lookout for some of these signs in your peers or in yourself



How can we support one another?

- D** Deliberately avoiding others
- I** Increased irritability, restlessness, agitation, stress and anxiety
- S** Sending or posting moody messages on social media
- T** Talking about death or dying
- R** Reacting differently or gradually losing interest in things they used to like
- E** Eating more than usual or having a much reduced appetite
- S** Sleep pattern changes with difficulty falling asleep or oversleeping
- S** Slowing down of energy levels

If you notice any of these signs in yourself or your friends,
have a chat with your school counsellor or teacher
Or contact SOS 24-hour hotline at **1-767** or **1800-221-4444**

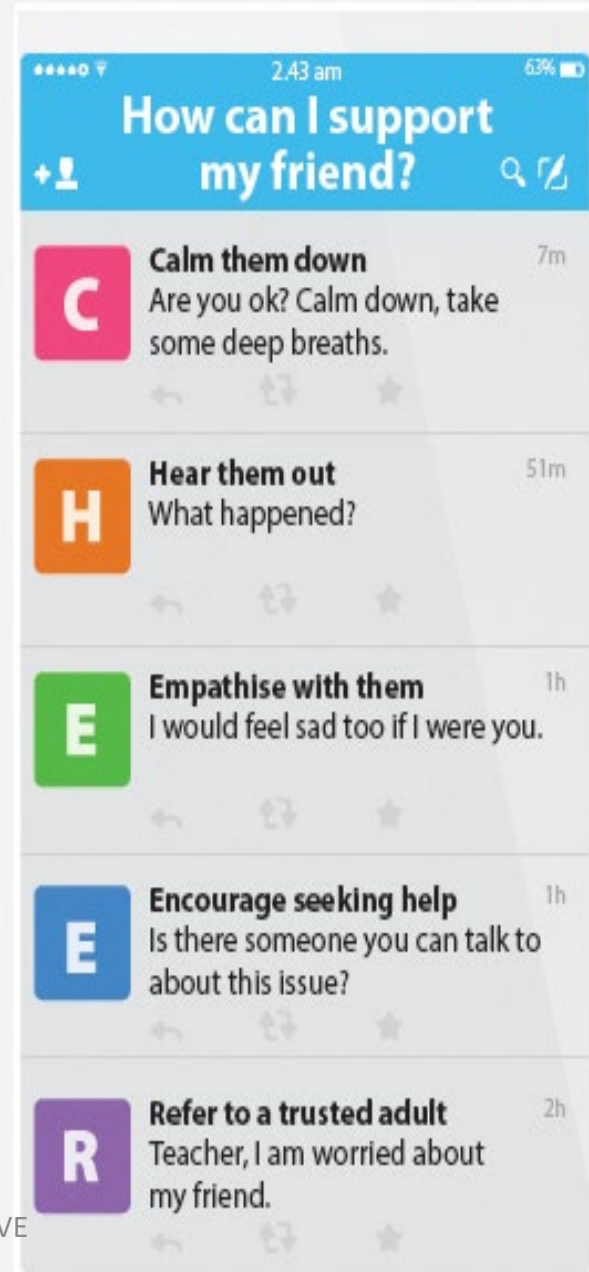


Supporting Your Friend

We may each experience different emotions upon receiving the results. You can share your friends' joy by congratulating them or give words of encouragement to friends who may be disappointed with their results.



Keep a lookout for your friends in distress. You can support them in the following ways:



Release of N Level Results

TODAY, you will get:

- 1. Result Slip & Certificate** (Please check the personal particulars printed on your examination certificates. There will be an administration fee of \$50 payable for any request to amend an examination certificate. All requests have to be submitted by **31 Mar 2024.**)
- 2. Form N** (Used for JIE)
- 3. ITE Admission Booklet**
- 4. What's Next Pamphlet**
- 5. RP Tote Bag**



Admissions Exercises

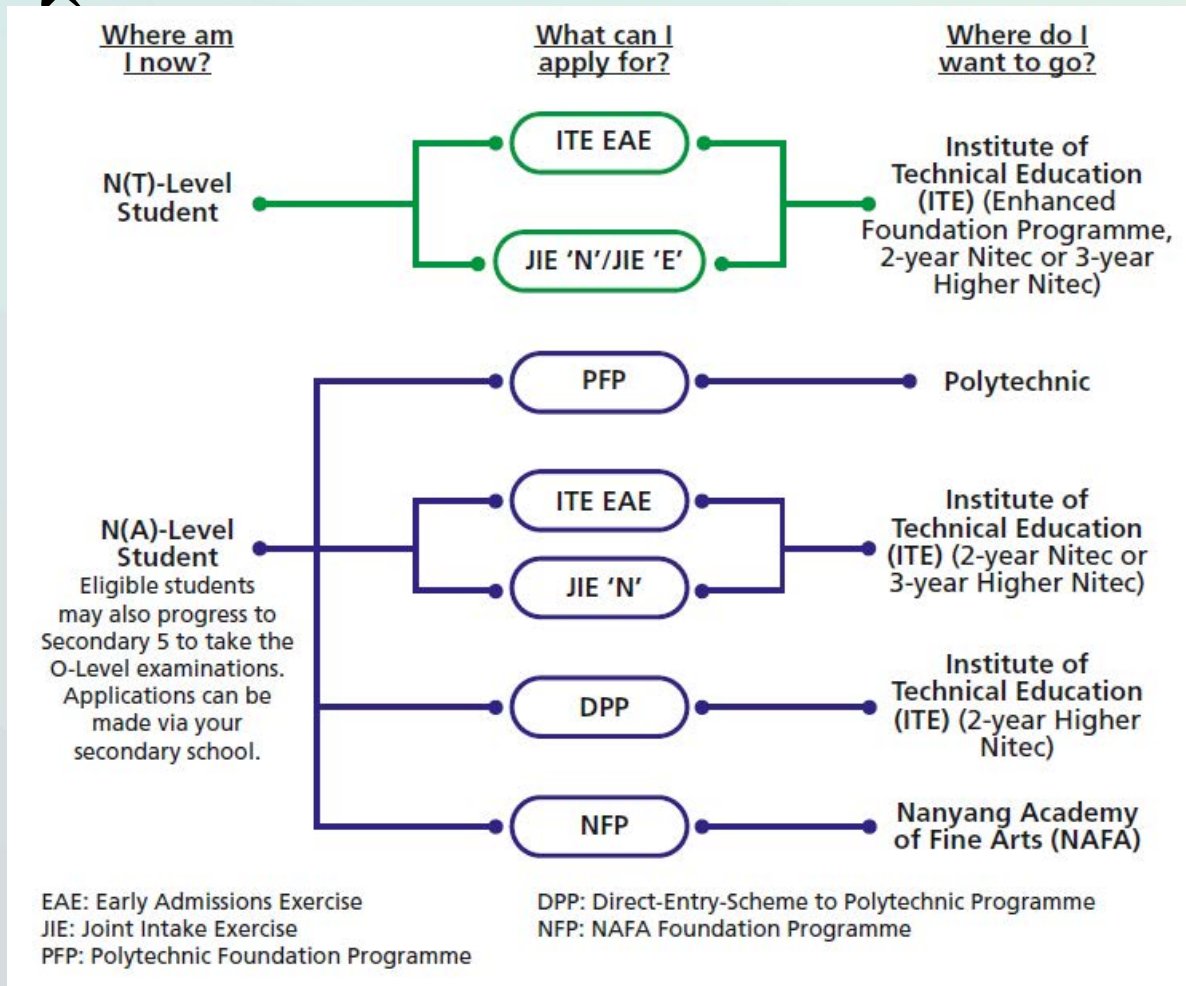


**CARING LEADER
THINKING CITIZEN**



OFFICAL (CLOSED) \ NON-SENSITIVE

Admissions Exercises



<https://www.moe.gov.sg/post-secondary/admissions>

For more information on applying to these courses, you can visit <https://ite.edu.sg/admissions/traineeship>

For the list of 3-year Higher Nitec courses, please visit <https://www.ite.edu.sg/courses/full-time-courses/nitec-and-3-year-higher-nitec>

Selected Nitec and Higher Nitec courses are available in traineeship mode.

Admissions Exercises - Application Timeline



(N-Level Results)

Dec

JIE 'N'

JIE 'E'

DPP

NFP

(Start of 2-year *NITEC* and 3-year *Higher Nitec*)

Jan

PFP

DPP

(2nd window of applications)

(Start of Polytechnic and 2-year *Higher Nitec* Term)

Apr



Details of Admission Exercises (EAE)

ITE EAE – ITE Early Admissions Exercise

ITE EAE is an aptitude-based admissions exercise that allows students to apply and receive conditional offers for admission to ITE based on their aptitude and interest, prior to receiving their final GCE N-Level examination results. It allows students to demonstrate their aptitudes and interests apart from academic grades, thus allowing a wider range of talents to be recognised.



go.gov.sg/iteeae

For Sec 4 N(A) and 4 N(T) students with confirmed ITE EAE offers

- Must honour their EAE offers
- Not allowed to apply for Nitec courses or 3 year Higher Nitec courses at the Joint Intake Exercise (JIE)
- But, Sec 4NA can still apply for the Direct Entry Scheme to Polytechnic Programme DPP after the release of the GCE 'N' Level results, or Polytechnic Foundation Programme PFP after the release of the GCE 'O' Level results, if they qualify.

Details of Admission Exercises

JIE 'N'/JIE 'E' – Joint Intake Exercise

The JIE 'N' is for 2-year *Nitec* or 3-year *Higher Nitec* courses offered by ITE.

The JIE 'E' is for GCE N(T) students to apply for the 3-year *Nitec* course with Enhanced *Nitec* Foundation Programme.



go.gov.sg/applyjie

JIE 'N'

- GCE 'N' (Technical)
- GCE 'N' (Academic)

JIE 'E'

- GCE 'N' (Technical) with < 2 passes

Details of Admission Exercises (DPP)

DPP – Direct-Entry-Scheme to Polytechnic Programme

DPP allows Secondary 4N(A) students to be admitted directly into selected 2-year *Higher Nitec* programmes at ITE without having to sit for the O-Level examinations or undergo a *Nitec* programme. DPP students who successfully complete their *Higher Nitec* courses at ITE and attain the required qualifying Grade Point Average (GPA) scores are guaranteed a place in a polytechnic diploma course mapped to their *Higher Nitec* course.



go.gov.sg/applydpp

DPP/ JIE 'H' –GCE 'N' (Academic)

- Serves as an alternative to Sec 5.
- Prepares Sec 4N(A) students for progression into selected polytechnic diploma courses
 - via a 2 year Higher Nitec programme at ITE, and
 - a 10 week DPP preparatory course.
- DPP students who successfully complete their Higher Nitec courses **and** attain the minimum qualifying Grade Point Average (GPA) (e.g. 2.5 out of 4) are subsequently guaranteed a place in a polytechnic diploma course mapped to their Higher Nitec course.
- Unsuccessful applicants can apply for progression to Sec 5 N(A) or for Nitec/3 year Higher Nitec courses in 2nd phase

Details of Admission Exercises (DPP)

DPP – Direct-Entry-Scheme to Polytechnic Programme

DPP allows Secondary 4N(A) students to be admitted directly into selected 2-year *Higher Nitec* programmes at ITE without having to sit for the O-Level examinations or undergo a *Nitec* programme. DPP students who successfully complete their *Higher Nitec* courses at ITE and attain the required qualifying Grade Point Average (GPA) scores are guaranteed a place in a polytechnic diploma course mapped to their *Higher Nitec* course.



go.gov.sg/applydpp

DPP/ JIE 'H' –GCE 'N' (Academic)

- Students who have sat for both GCE N Level and GCE O Level examination subjects can apply for the DPP prior to the release of their GCE O Level results
 - Use both their GCE N Level results, and results from their school-based prelim exams for O level subjects.
 - Successful DPP applicants will receive an offer for a DPP course and do not need to return to schools for Sec 5 N(A).
- Upon the release of the O Level examination results, ITE will verify if applicants have fulfilled the criteria for admission to the DPP.
- Students who are newly eligible for the DPP after the release of the O Level results in 2023 may also apply in January 2023.

Joint Intake Exercise 'H'

DPP Subject-specific entry requirements:

Applied Sciences, Engineering and Info-Communications Technology Higher Nitec Courses	Minimum Required Grades
English Language Syllabus A	4
Mathematics	4
Any three other subjects excluding CCA	5
Business & Services Higher Nitec Courses	Minimum Required Grades
English Language Syllabus A	3
Mathematics	4
Any three other subjects excluding CCA	5

DIRECT-ENTRY-SCHEME TO POLYTECHNIC PROGRAMME (DPP)

5 Things You Need to Know

1. What is the DPP?

- Prepares Sec 4N(A) students for progression into selected polytechnic diploma courses via a 2-year *Higher Nitec* programme at ITE, and a 10-week DPP preparatory course
 - Serves as an alternative to Sec 5
- DPP students who meet the minimum qualifying GPA score are guaranteed a place in a polytechnic diploma course mapped to the *Higher Nitec* course. (Refer to <https://www.ite.edu.sg/admissions/full-time-courses/higher-nitec-dpp> for course mapping.)
- About 1,200 places offered across 18 *Higher Nitec* courses

2. Am I eligible for DPP?

- Sec 4N(A) student who has sat for GCE N-Level exams in 2023
 - Obtained ELMAB3 aggregate of 19 points or less (before deduction of CCA bonus points)
 - Meet course-specific entry requirements
- If you can check all 3 boxes above, you're eligible!**
(Note: Being eligible to apply does not guarantee you a place in a DPP Higher Nitec course.)

If you have offered GCE O-Level examination subjects in 2023, you may refer to this table for the equivalent grade to compute your ELMAB3 aggregate:

GCE O-Level Grade	Converted Grade
A1-B3	1
B4-C6	2
D7	3
E8	4

3. How do I apply?

- Upon release of the GCE N-Level results, all DPP-eligible students may apply for DPP *Higher Nitec* courses via the ITE website (<https://www.ite.edu.sg>).
- You may select up to 12 course choices.
- Remember to provide updated contact details in your application so that ITE can contact you if necessary.

4. How will I be informed of the outcome?

- You should check your DPP posting results online on the morning of the release of the DPP posting results.
- You will then have to indicate if you wish to accept/reject/appeal the offer.
- Your offer will be void if you do not accept the offer by the stipulated date. You will be required to continue with your classes in Sec 5 or with your *Nitec* course if your application via JIE 'N' is successful

5. What happens next?

Upon accepting your DPP offer, you will attend a 10-week DPP preparatory programme starting from Jan 2024.

Release of GCE N-Level Results	DPP Application	Application Processing	Release of DPP Posting Results	Accept/Reject/Appeal	Release of GCE O-Level Results	DPP Application for newly-eligible students	Application Processing	Release of DPP Posting Results	End of DPP Admissions Exercise
--------------------------------	-----------------	------------------------	--------------------------------	----------------------	--------------------------------	---	------------------------	--------------------------------	--------------------------------

December 2023

January 2024

Early February
2024

Polytechnic Foundation Programme (PFP)

Diploma-specific foundation programme over one at the polytechnics.

- ELMAB3 \leq 12pts (**excluding CCA bonus pts**)
- Meet subject-specific entry requirements

PFP Courses featured in Group 1	Minimum Required Grades
English Language Syllabus A	3
Mathematics / A. Mathematics	3
D&T, F&N, Science	3
Any other two subjects excluding CCA	4
PFP Courses featured in Group 2	Minimum Required Grades
English Language Syllabus A	2
Mathematics / A. Mathematics	3
Art, Pure or Combined Humanities, POA	3
Any other two subjects excluding CCA	4



Details of Admission Exercises (PFP)

PFP – Polytechnic Foundation Programme

PFP is a one-year programme that offers a practice-oriented curriculum taught by polytechnic lecturers to better prepare polytechnic-bound Secondary 4 N(A) students for entry into selected polytechnic diploma courses. PFP students are given provisional places in diploma programmes, subject to them passing all modules in the one-year programme.



go.gov.sg/pfp

- Students who are eligible for and intend to apply for PFP must report for Sec 5 N(A) in January (being eligible for PFP does not guarantee placement into a PFP course).
- Placement in PFP is subject to the availability of vacancies and in open competition with other eligible applicants based on merit.
- Upon release of the GCE O Level results in Jan 2024,
 - More details on the PFP will be made available.
 - After the release of PFP application results, students who have accepted a place in the PFP are still required to attend classes up till the last Friday of January, i.e. 26 January 2024.

POLYTECHNIC FOUNDATION PROGRAMME (PFP)

Essential Things You Need to Know

1. What is the PFP?

- A foundation year at the polytechnics that:
 - Prepares well-performing Sec 4N(A) students for entry into relevant polytechnic diploma courses
 - Serves as an alternative to Sec 5
- Conducted over two academic semesters at the polytechnics
- Students must pass all PFP modules in order to progress to their respective, pre-selected diploma courses.

2. Am I Eligible for PFP 2024?

You are eligible for the PFP if you:

- Sat for GCE N-Level exams as a school candidate in 2023
- Have obtained an ELMAB3 aggregate of 12 points or less (before deduction of CCA bonus points)
- Met subject-specific entry requirements as listed on the PFP portal

If you can check all 3 boxes above, you're eligible!
(Note: Eligibility does not guarantee you a place in a PFP course)

If you had offered GCE O-Level examination subjects in 2023, you may refer to this table for the equivalent grade to compute your ELMAB3 aggregate:

GCE 'O' Level Grade	Converted Grade
A1-B3	1
B4-C6	2
D7	3
E8	4

3. How do I Apply?

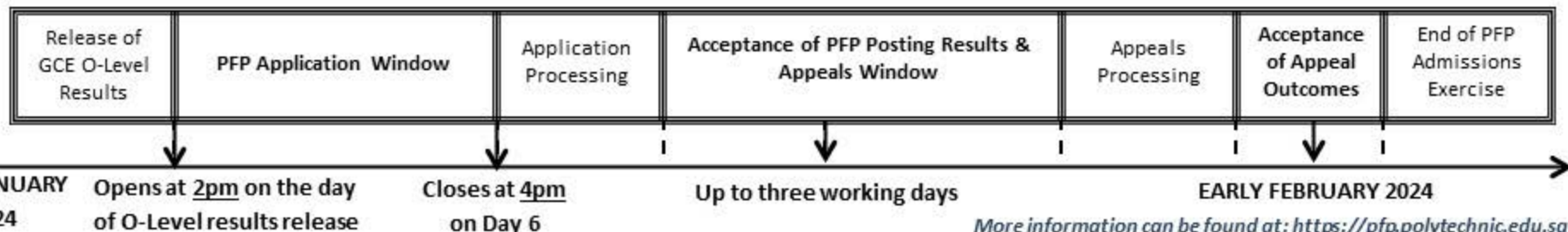
- Upon release of the GCE O-Level results, all PFP-eligible students will receive Form P containing a PFP PIN that allows them to apply for the PFP at this [link](#).
- You may select up to five course choices.
- Remember to provide updated contact details in your application to allow the polytechnics to contact you if necessary.
(Note: You should continue to attend Sec 5 from 2 January 2024 while applying for PFP.)

4. How Will I be Informed of the Outcome?

- You should log in to the PFP portal to check your application outcomes on the day of PFP posting results release.
- You will then have to indicate if you wish to accept/reject/appeal the offer.
- If you do not select any option, your offer will become invalid and you will be required to continue with your classes in Sec 5/DPP.
(Note: If your appeal is successful, your original offer will be voided, regardless of whether you accept the new PFP offer.)

5. What Happens Next?

- If you accept your offer, you will receive an enrolment package from the polytechnics in February/March 2024.
- The PFP year will start in April 2024.



More information can be found at: <https://pfp.polytechnic.edu.sg>

Additional Notes for 4N(A)

For students who are **interested in BOTH the DPP and PFP**, there are 2 options.

Option 1	Option 2
<p>Apply for and accept DPP offer prior to the release of the GCE O-Level results.</p> <ul style="list-style-type: none">• School will contact them to collect the PFP eligibility form (Form P) if they are eligible for PFP after the release of the GCE O-Level results.• Students who decide to apply for & accept PFP offer in January will need to withdraw from the DPP course. Applicants can apply for a refund of their DPP enrolment fees, subject to ITE's approval.	<p>Progress to Sec 5N(A) first & then apply for both the PFP and DPP upon release of the GCE O-Level results.</p> <ul style="list-style-type: none">• Students who are offered a place in both the PFP & DPP may only accept one course offer.• Students who accept both offers will have both offers voided. If their application to either the PFP or DPP is successful, they will withdraw from Sec 5N(A) by the end of January 2024.



SECONDARY FIVE

O LEVEL

FOR N(A) HOLDERS



**CARING LEADER
THINKING CITIZEN**



Progression to Sec 5

- a) **ELMAB3 is 19pts or less**
- b) At least a grade 5 for all subjects used in the computation of ELMAB3.
- c) Do scan the QR code and submit the form with your parent's consent by **22 December 2023.**



<https://go.gov.sg/2024sec5naevgss>

Progression to Sec 5

Some factors for consideration...

1. Your learning preferences – hands-on vs academic
2. ‘Topping up’ to meet the demands of the O level syllabus
3. Different, and higher O level assessment requirements
4. Your likelihood of success at O levels . . .



Progression to Sec 5

Some Actual Statistics to Guide You in Making Your Choice

- Students with poorer ELMAB3 in N Levels tend to also achieve poorer ELB4 in the O Levels.
- There are exceptions, of course.
- **Important to make your choices wisely.**



Progression to Sec 5

Cut-off for Poly Courses based on past years results

Course	Net ELR2B2
Business	8 – 15
Biomedical Science	7 – 11
Civil Engineering	20
Electrical & Electronic Engineering	17
Marine Engineering	22
Information Technology	13 – 26
Mass Media Management	13



Progression to Sec 5

All Sec 4N(A) students who do not have a confirmed place in the DPP or *Nitec* programme at ITE, but are eligible for progression to Sec 5, should report to school on **2 January 2024 (Tuesday)** to continue with Sec 5.

This **includes** students who are eligible for, and intend to apply for the PFP, as **eligibility does not guarantee placement** into a PFP course. Following the release of PFP application results, all PFP-bound students will be required to attend classes up till **26 January 2024**.



Progression to Sec 5

- **2024 Sec 5N(A) Class List** would be disseminated through Parents Gateway by **Friday, 29 Dec 2023**.
- You can collect the book list from the General Office. Book list will also be sent through Parents Gateway.



Details of Admission Exercises (NFP)

NFP – NAFA Foundation Programme

NFP is a one-year practice-based programme that prepares N(A)-Level holders to pursue a diploma in the creative arts. NFP students who successfully complete the programme will be offered a place in their chosen diploma course at NAFA.



go.gov.sg/nafa-applynow

Minimum Eligibility Criteria for ITE / DPP / PFP / Sec 5N(A)

ITE (JIE 'N' / JIE 'E')	Direct Entry Scheme to Polytechnic Programme (DPP)	Polytechnic Foundation Programme (PFP)	Sec 5N(A)
<p>Must fulfill minimum entry requirements of the intended course.</p>	<ol style="list-style-type: none"> ELMAB3 ≤ 19 (excluding CCA bonus points). Met subject-specific entry requirements for the course offered. 'O' Level subjects may be used for computation. 	<ol style="list-style-type: none"> ELMAB3 ≤ 12 (excluding CCA bonus points). Met subject-specific Entry requirements for the course offered (min Grade 3) 'O' Level subjects may be used for computation 	<ol style="list-style-type: none"> ELMAB3 ≤ 19 (excluding CCA bonus points). At least Grade 5 for all subjects used in computation of ELMAB3.
<ul style="list-style-type: none"> Apply from 2.30pm today to 5pm on 22 Dec 2023. Refer to pg. 7 of the 2024 Intake Exercise Booklet for more info. 	<ul style="list-style-type: none"> Apply from 2.30pm today to 5pm on 23 Dec 2022. Refer to pg. 69 of the 2023 Intake Exercise Booklet for more info. 	<ul style="list-style-type: none"> Submit online application after release of GCE 'O' Level result in 2023 Report to school on 3 Jan 2023. 	<ul style="list-style-type: none"> Must be committed to pursue 'O' Level education. Report to school on 2 Jan 2024.

Key Dates for Jan 2024 Intake Exercise

IMPORTANT DATES FOR INTAKE ACTIVITIES

Please note the following important dates:

Joint Intake Exercise 'N' (JIE 'N') for 3-Year Higher Nitec / 2-Year Nitec Courses and Joint Intake Exercise 'E' (JIE 'E') for 4-year Higher Nitec course with Enhanced Foundation Programme and 3-Year Nitec Courses with Enhanced Nitec Foundation Programme

Activity	Date (Tentative)
Application Period	The application will commence following the official announcement of the 2023 Singapore-Cambridge GCE 'N' (Technical) and GCE 'N' (Academic) Level Examination results. The application period will start from 2.30pm on the 1 st day of application and end at 5pm on 21 Dec 2023. The exact application period will be published on the ITE website following the release of the GCE 'N' Level Examination results.
Release of Course Interview Details	22 Dec 2023 (from 2pm) - (Please refer to page 28)
Interview for Courses with Interview Requirement	26 Dec 2023 or 27 Dec 2023
Release of Application Results	29 Dec 2023 (from 9am)
Acceptance of Offer	29 Dec 2023 to 3 Jan 2024
Reporting to Colleges and Commencement of Training	8 Jan 2024
Appeal	29 Dec 2023 to 3 Jan 2024
Release of Course Interview Details under Appeal Phase	5 Jan 2024 (from 9am)
Interview for Courses with Interview Requirement under Appeal Phase	8 Jan 2024
Release of Appeal Results	10 Jan 2024 (from 9am)

Joint Intake Exercise 'H' (JIE 'H') for 2-Year Higher Nitec with 10 Weeks Preparatory Courses under Direct Entry Scheme to Polytechnic Programme (DPP)

Activity	Date (Tentative)
Application Period	The application will commence following the official announcement of the 2023 Singapore-Cambridge GCE 'N' (Academic) Level Examination results. The application period will start from 2.30pm on the 1 st day of application and end at 5pm on 21 Dec 2023. The exact application period will be published on the ITE website following the release of the GCE 'N' (Academic) Level Examination results.
Release of Application Results	22 Dec 2023 (from 2pm)
Acceptance of Offer	22 Dec 2023 to 27 Dec 2023
Appeal	22 Dec 2023 to 27 Dec 2023
Release of Appeal Results	29 Dec 2023 (from 9am)
Reporting to Colleges and Commencement of Training	8 Jan 2024

Traineeship

Activity	Date (Tentative)
Application Period	The application will start from 2.30pm on the day of release of the 2023 Singapore-Cambridge GCE 'N' Level Examination results and end at 5pm on 31 December 2023. Please refer to the ITE website following the release of the 2023 GCE 'N' Level Examination results for the exact application period and more details on the intake. Applicants will have to attend an interview with the sponsoring company if they are shortlisted and will only be enrolled into the Traineeship programme upon acceptance and employment by the sponsoring company.

Note: All the above dates and schedules are tentative. Please refer to the latest changes (if any) on the ITE website following the release of the 2023 GCE 'N' Level Examination results.

Refer to Pg 6 of 2024 Intake Exercise Booklet

For instructions on Application; Checking of Course Interview; Acceptance of Offer; Appeal, refer to the following pages.

(Register with your personal email):

- Full-time 3-Year/4-year Higher Nitec and Nitec Courses: Pg 20 – 43
- DPP: Pg 50 – 72



Key Dates for Full-Time Nitec Courses

Key Activity	Period for 2-Year and 3-Year Nitec Courses, and 3-Year and 4-year Higher Nitec courses	Remarks
1st Phase (Main Phase)		
Application	18 Dec 2023 (2.30pm) to 21 Dec 2023 (5pm)	Apply through the Internet at https://www.ite.edu.sg with NRIC / FIN and Date of Birth. You may also apply using SingPass.
Release of Results	29 Dec 2023 at 9am	Check results at https://istudent.ite.edu.sg with web ID and password
Acceptance of Course Offer Period	29 Dec 2023 to 3 Jan 2024	Accept course offer at https://istudent.ite.edu.sg with web ID and password
2nd Phase (Late Application/Appeal Phase)		
Application	29 Dec 2023 to 3 Jan 2024	Apply through the Internet at https://istudent.ite.edu.sg with NRIC / FIN and Date of Birth. You may also apply using SingPass.
Release of Results	10 Jan 2024 at 9am	Check results at https://istudent.ite.edu.sg with web ID and password
Acceptance of Course Offer Period	10 Jan 2024 to 12 Jan 2024	Accept course offer at https://istudent.ite.edu.sg with web ID and password
3rd Phase (Final Top-up Phase)		
Application	1 st Top-up Phase Application - 10 Jan to 18 Jan 2024 2 nd Top-up Phase Application - 24 Jan to 7 Feb 2024	Apply through the Internet at https://istudent.ite.edu.sg with NRIC / FIN and Date of Birth. You may also apply using SingPass.
Release of Results	1 st Top-up Phase - 15 Jan to 24 Jan 2024 2 nd Top-up Phase - 24 Jan to 14 Feb 2024	Check results at https://istudent.ite.edu.sg with web ID and password
Acceptance of Course Offer Period	1 st Top-up Phase - 15 Jan to 24 Jan 2024 2 nd Top-up Phase - 24 Jan to 14 Feb 2024	Accept course offer at https://istudent.ite.edu.sg with web ID and password

Jan 2024 Intake Term Commencement Date: 8 Jan 2024

OFFICIAL (CLOSED) \ NON-SENSITIVE

Joint Intake Exercise (JIE)

- **Interview** (only for selected courses) on Tue 26 Dec 2023 and Wed 27 Dec 2023.
 - Applicants can log in on Fri 22 Dec 2023 (2pm) to check the interview details.
- If you wish to appeal, please **accept the course offered before** applying in the **2nd Phase (Late Application / Appeal Phase)**
- Unsuccessful applicants can appeal / reapply under the **2nd Phase (Late Application / Appeal Phase)** and **3rd Phase (Final Application)** for courses with vacancies.

For further enquiries, N-Level school leavers can contact ITE Hotline

@ 1800 2222 1111 or 65902211

OFFICIAL (CLOSED) \ NON-SENSITIVE



Key Pointers for Students on ITE's Joint Intake Exercise (JIE) for Admission to Nitec Courses

ALL N(T) students and N(A) students (who are not progressing to 5N(A) or repeating 4N(A)) are eligible for JIE.

Keen competition for Nitec and Higher Nitec courses, so use all 12 choices wisely!

Participation in Main Phase is key to secure a place in ITE!

If you are keen in the work & learn option, you may consider applying for the ITE Traineeship programme. Do apply in the Main Phase to avoid missing a place in ITE!

If you have received an additional letter, then you are eligible for the Enhanced Foundation Programme.

If you are eligible for EFP, make sure you apply for the 2-year Nitec and 3-year Higher Nitec first before applying for EFP!

The EFP helps to build the necessary literacy and numeracy foundations that will enable you to successfully complete your Nitec course!

If you are counter-offered a course, accept it first before appealing for another course you may be more interested in!

Online Application for


**2-Year Nitec and 3-Year
Higher Nitec Courses**


**3-Year Nitec/4-year Higher Nitec
Course with EFP
(for N(T) courses with 0, 1 pass)**

1. Go to <https://www.ite.edu.sg>.

2. Click



3. Under JIE 'N', click  icon to link to the application website

Under JIE 'E', click  icon to link to the application website

4. At the application website:

- a) Enter NRIC / FIN and Date of Birth to start application. You may also apply using SingPass.
- b) Upon completion of application, applicants will receive their **web ID** and password.

*Students who are eligible for the 3-Year Nitec/4-Year Higher Nitec Course with EFP are encouraged to go through **both** JIE 'E' and JIE 'N' e-application process

OFFICAL (CLOSED) \ NON-SENSITIVE



Checking of Posting Results/Accept Course Offer

2-Year Nitec and 3-Year
Higher Nitec Courses

3-Year Nitec/4-year Higher Nitec
Course with EFP
(for N(T) courses with 0, 1 pass)

1. Go to <https://istudent.ite.edu.sg>.
2. Enter **web ID** and password.
3. Click '**Self-Service**' followed by '**Student Admission**' followed by '**View Application Results**' to view the application results and to accept course offer.

The above steps applies to all phases.
For more details, please refer to ITE Admission Booklet.



Joint Intake Exercise (JIE)

Scenarios	Reason for contact by teachers / MOE
<i>If you did not apply</i>	to understand your reasons and, where necessary, assist you to complete the ITE application online in the Appeal and Top-Up Phases.
<i>If you applied but had counter offers</i>	to advise/remind you to accept the counter-offer before submitting an appeal.
<i>If you are not enrolled in any course in secondary school or Post-Secondary Ed Institutions (i.e. Poly/ ITE/ NAFA/ LaSalle) by May 2024</i>	For further support and guidance



Additional Information For Students

Should you require further advice or assistance in your applications or future plans, please contact your teachers and ECG Counsellor.


For further inquiries, you may refer to the following hotlines and links for more information and advice on further education:

Institute of Technical Education (ITE)	
ITE Hotline (for ITE admissions and courses)	1800 2222 111 training@ite.edu.sg
Education and Career Guidance (ECG)	
ECG Centre @ MOE	6831 1420 MOE_ECG@moe.gov.sg e-Appointment: https://go.gov.sg/moe-ecg-centre



Additional Information For Students

The information listed in the table below will help you to make an informed decision on which choice of courses you could consider applying at ITE.

S/N	Information	Attachment/Link
1	ITE Factsheet 2023	 JIEN2023 Factsheet
2	ITE Course Booklet 2024	https://for.edu.sg/ite-course-booklet-2024
3	ITE Traineeship Courses	https://www.ite.edu.sg/courses/traineeship-courses.
4	Information on Progression Opportunities (From <i>Nitec</i> Courses to <i>Higher Nitec</i> and Technical Diploma Courses)	https://www.ite.edu.sg/admissions/full-time-courses/nitec/progression-opportunities
5	Information on Graduate Employment Survey	https://www.ite.edu.sg/admissions/graduate-employment-survey

For Students Planning for Private Education



OFFICIAL (CLOSED) \ NON-SENSITIVE

CARING LEADER
THINKING CITIZEN



The 3Rs when deciding on Private Education

Reasons

Why are you
furthering your
studies?

Readiness

How ready are
you to further
your studies?

Risks

Do you know
the possible
drawbacks?



<https://go.gov.sg/3rs>

OFFICAL (CLOSED) \ NON-SENSITIVE



8 Things You Should Know Before You Enrol in A Private School

School Registration



Ensure the school is registered with CPE. Review the school's registration period, expiry date and its overall registration track record.

Partner Institution



Research on the partner institution conferring the diploma or degree, and whether the qualification is recognised by the industry.

EduTrust Certification Scheme

Is the school EduTrust-certified*? Under the scheme, private schools are assessed for their performance in areas such as school management and provision of student support services.



**Schools are required to obtain EduTrust certification in order to offer external degree programmes*

School Premises

Head down to the campus ground to check the facilities and support services. Observe the study environment too.



Fee Protection



Ask if there is any course fee protection so that you will be able to recover unconsumed course fees should the school close down.

Beyond Course fees



Find out about the course syllabus and materials, graduation rates and employment prospects. Approach the alumni to find out what they think of the school.

Teachers

Check if the teachers are qualified to teach the course.



Internship

If industry attachment is included, find out which organisation you will be attached to, the period of attachment and the alternative arrangement should the attachment become unavailable. Verify the information with the organisation as well.



What's NEXT?

After Receiving N-Level Results



OFFICAL (CLOSED) \ NON-SENSITIVE

CARING LEADER
THINKING CITIZEN



How to check your progression status?

Under 'Remarks' on your result slip / certificate

- **'Promoted'** means
 - Eligible for Sec 5N(A)
 - Offer for DPP is reflected in Form N
 - Offer for PFP only in Jan 2024
 - Eligible to apply for ITE Nitec/Higher Nitec courses
- **'Repeat'** means
 - Eligible to repeat Sec 4N(A) or
 - Eligible to apply for ITE Nitec courses (**RECOMMENDED**)
- **'ITE'** means
 - Eligible to apply for Nitec courses

Registration Support in School

Venue: Computer Lab 3


Date	Time
19 Dec 2023 (Tue)	9.00am to 12.00pm
20 Dec 2023 (Wed)	2.00pm to 4.00pm

Please seek assistance from

- Technical Assistant if you encounter technical problems.
- Year Head or FTs if you need help with the registration process.

Other Administrative Matters

Check accuracy of your personal information on your result slip and certificate.

S/N	Scenario	Instructions
1	Appeal for review of results / Intent to repeat	Please see Mr Shahril by 3.30pm today.
2	Intention to progress to 5 N(A)	Submit your intention through the form accessible via the QR code by 22 Dec 5pm. 

Important information for all students - Amendment to Certificate

- a) Please check that the names printed in your certificate is correct.
- b) You may request for a re-print of your certificate only if your name is printed wrongly due to misspelling.
- c) Amendment fee of \$50 for each certificate.
- d) Request must be submitted to SEAB by **31 Mar 2024**.



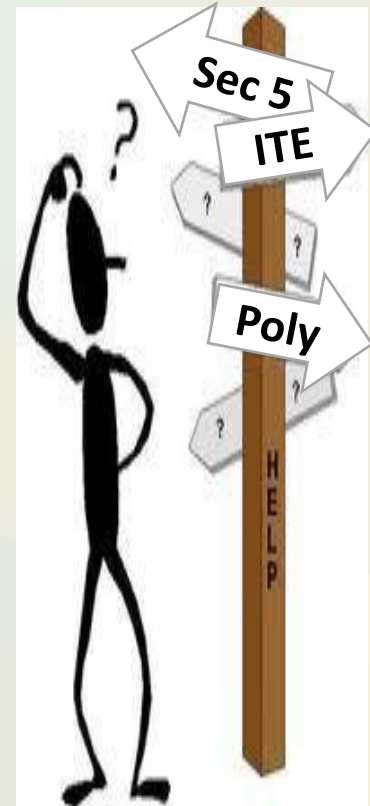
Important Information for all students - Appeal for Review of Results

- a) Per Appeal Per Subject --- **\$112.35**
- b) Strong reasons for Appeal of Results.
- c) All appeals must be supported by the School Leader and submitted through the school.
- d) Closing date for submission of appeals including payment of appeal fees is by Friday, **22 December 2023**.



Release of N Level Results

- There are many routes to success.
- Explore all possible education options and look for one that best fits your needs, interests, abilities and passion.
- It may just mean taking a road less travelled.
- Consult your parents, teachers, school counsellor.



Final Reminders

Check that you have received the following:

- Result slip
- Form N
- Examination Certificate*
- 2023 Intake Exercise Admission Booklet
- What's Next pamphlet
- RP Tote bag

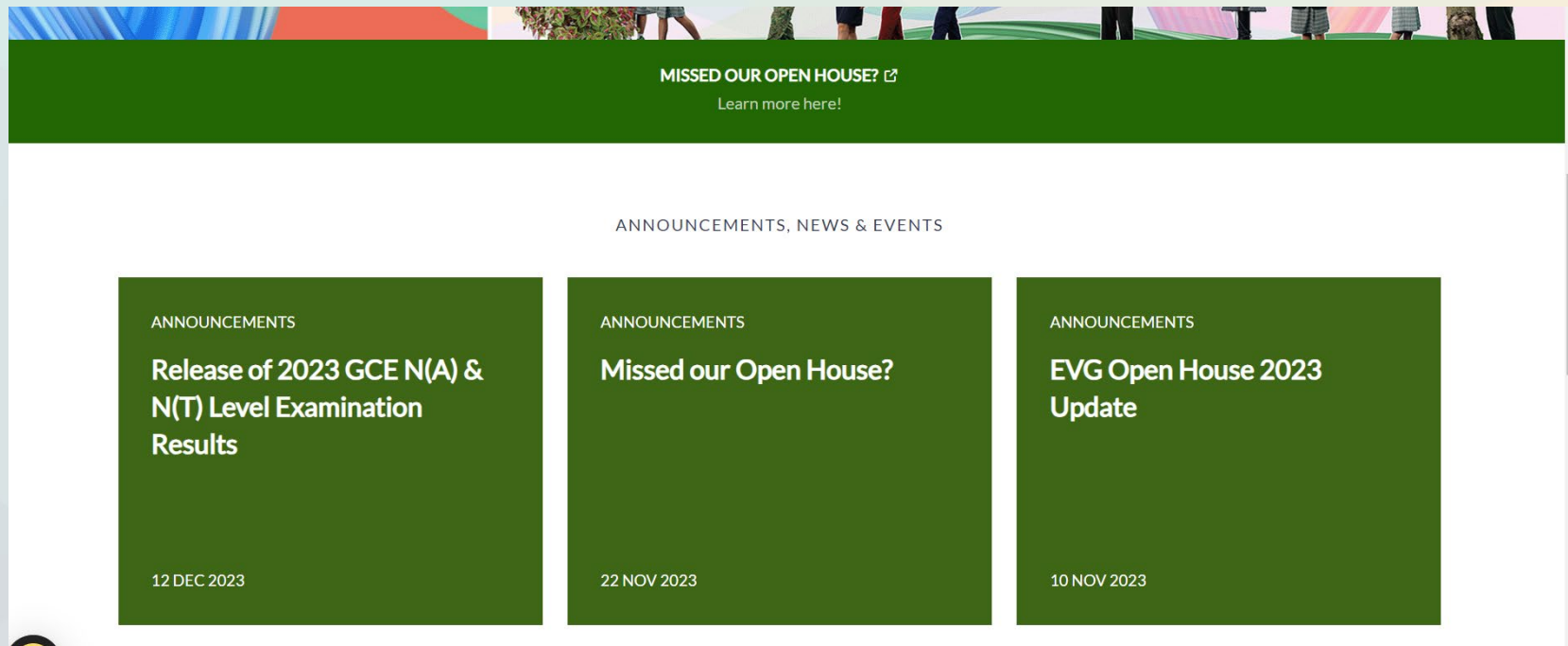
Summary of Important Dates

Admission Exercise	Application Dates	Date of Posting Result	Period for Acceptance / Rejection of Offer
DPP	Start: 18 Dec 2023, 2.30pm	22 Dec 2023, 2pm	Start: 22 Dec 2023 End: 27 Dec 2023
JIE (Main Phase)	End: 21 Dec 2023, 5pm	29 Dec 2023, 9am	Start: 29 Dec 2023 End: 3 Jan 2024

Where to access the materials

School website

- Announcements



The screenshot shows a website header with a green bar containing the text "MISSED OUR OPEN HOUSE? [Learn more here!](#)". Below this is a section titled "ANNOUNCEMENTS, NEWS & EVENTS" which features three green announcement cards. Each card includes the word "ANNOUNCEMENTS", a title, and a date.

ANNOUNCEMENTS	ANNOUNCEMENTS	ANNOUNCEMENTS
Release of 2023 GCE N(A) & N(T) Level Examination Results	Missed our Open House?	EVG Open House 2023 Update
12 DEC 2023	22 NOV 2023	10 NOV 2023

Release of N Level Results



The N-Level examination is not the destination.

It is part of your education journey.