

EVERGREEN SECONDARY SCHOOL

Release of O Level Results

11 Jan 2024

Restricted/Sensitive(Normal)

CARING LEADER
THINKING CITIZEN



AGENDA

1. Welcome back, Class of 2023!
2. Briefing on Important Information
 - a) Admission Exercises
 - b) Sources of ECG Support
 - c) Pathways available at the various institutions
 - d) Important Information for all students
3. Release of O Level Results



CLASS OF 2023

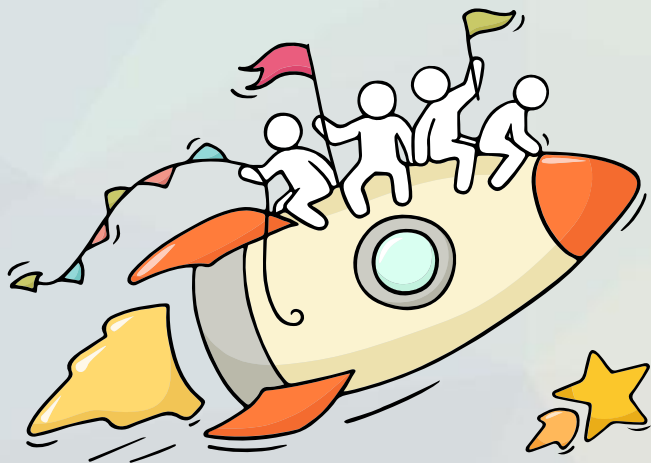


WELCOME BACK!



CELEBRATE EFFORTS!

The O-Level is a culmination of years of hard work and perseverance. Let's celebrate our efforts regardless of the results. Let's mark the end of the academic year by reflecting together on all our previous achievements in school and the challenges we have overcome!



Restricted/Sensitive(Normal)



THINK OPPORTUNITIES!

As you await your GCE O-Level results, there are some possibilities:

- You are happy that your results meet your expectations,
- You are overjoyed that your results exceed your expectations, or
- You are worried/upset because your results fall short of your expectations.

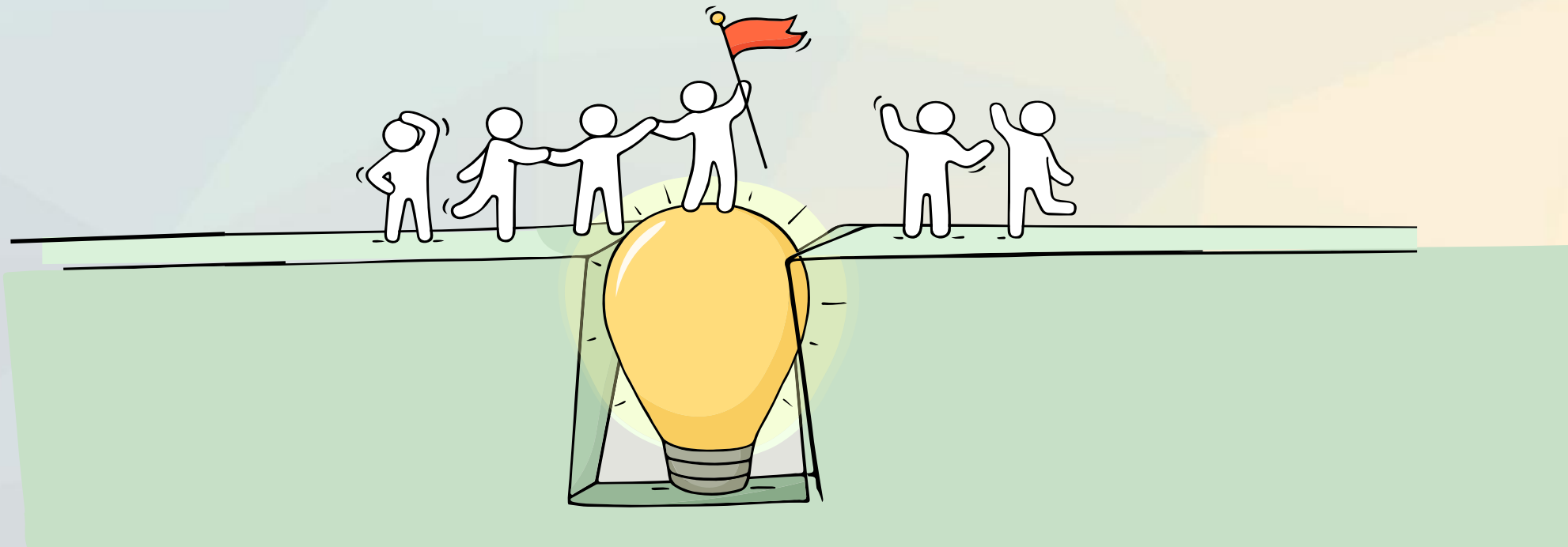
Remember that **everyone's learning journey is different** but **we can each have a fulfilling outcome!**



Many pathways and opportunities!

Reaching out for help is a sign of strength, not weakness

If you have any concerns or are not coping, do reach out to someone you trust and speak with them. It could be a parent/guardian, teacher, School Counsellor or a friend that you can talk to.



Supporting Your Friend

We may each experience different emotions upon receiving the results. You can share your friends' joy by congratulating them or give words of encouragement to friends who may be disappointed with their results.



Keep a lookout for your friends in distress. You can support them in the following ways:

Calm them down

“Are you ok? Calm down, take a few deep breaths.”

Hear them out

“I am here to listen to you.” or “I am here for you.”

Empathise with them

“It sounds like you are disappointed.” or “It seems like this is a difficult time for you.”

Encourage seeking help

“Thanks for sharing. Why don't we speak with a trusted adult who can help?”

Refer your friend to a trusted adult

“Let's talk to our teacher or our School Counsellor so they can better support you. Do share your feelings with your parents/guardians too. Would you like me to accompany you?”



Help is readily available for you

There are other hotlines and chats available if you are more comfortable seeking help using these platforms.



SOS

SOS provides round the clock emotional support for those in distress, thinking of suicide or affected by suicide. This service is manned by trained volunteers.

Call: **1-767 or 1800-221-444**
(24-hour helpline)

There are also alternative avenues for emotional support through email and text messaging.

Email: **pat@sos.org.sg**
(Response within 48 hours)

SOS Care Text: **www.sos.org.sg**
(6pm – 6am on Mon to Thu and 6pm to 11:59pm on Fri)

Community Health Assessment Team (CHAT)

If you experience prolonged difficulties, CHAT provides personalised and confidential mental health checks and face-to-face consultation for youth aged 16 to 30. To speak with a youth support worker, you can:

Visit: **CHAT Hub at *SCAPE, #05-05** or
Call: **6493 6500/ 6501** or
Email: **CHAT@mentalhealth.sg**



Help is readily available for you

There are other hotlines and chats available if you are more comfortable seeking help using these platforms.

eC2

eC2 is an e-Counselling Centre where you can talk to a trained counsellor about the issues you are facing, right where you are.

Youths may chat with a counsellor online at: www.ec2.sg

Monday – Friday
(Excluding Public Holidays): 10am – 12pm & 2pm – 5pm

TOUCHline

TOUCHline is a helpline to provide youths with emotional support and practical advice.

Call: **1800 3772252**

Monday – Friday
(Excluding Public Holidays): 9am – 6pm

mindline.sg

mindline.sg is an online platform that provides tools, tips and resources to help you manage your health and well-being. Explore and find out how you can improve your mental well-being and support your friends too.

Find out more: www.mindline.sg



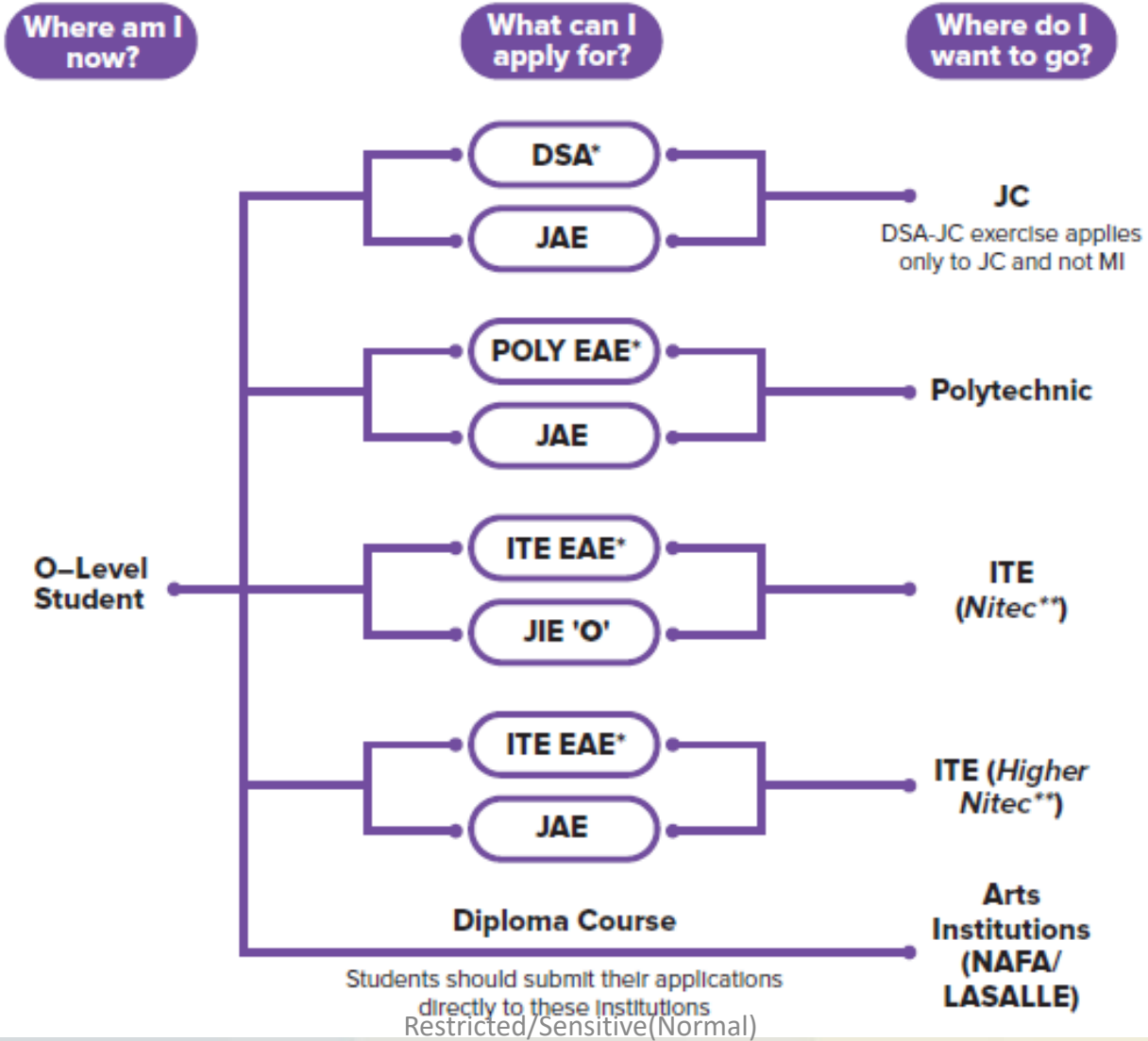
Admissions Exercises (JAE / PFP)

Restricted/Sensitive(Normal)


**CARING LEADER
THINKING CITIZEN**



Admissions Exercises for Ordinary (O) Level Students



Source:


 Guide to Post Sec Admission Ex



Aggregate Computations

- JC: **L1R5**
- MI: **L1R4**
- Polytechnic: **ELR2B2**
- ITE: **ELB4, ELR1B3 or ELR2B2**

Legend:

L1 = English or Higher Mother Tongue

R = Relevant subjects

EL = English Language

B = Best subjects

Please refer to page 26 of the JAE
Information Booklet.



Joint Admission Exercise (JAE)

Restricted/Sensitive(Normal)

CARING LEADER
THINKING CITIZEN



Joint Admissions Exercise (JAE)

Eligible school candidates who sat for the 2023 GCE O-Level examination will receive Form A via your emails and not the hardcopy.



Joint Admissions Exercise (JAE)

The JAE-IS will be accessible from **4.00pm on Thursday, 11 January 2024**, to **4.00pm on Tuesday, 16 January 2024** for students to submit their course choices through the JAE website at www.moe.gov.sg/jae.

Applicants are strongly encouraged to use the **JAE worksheet** (provided in Form A or the JAE information booklet) before submitting their online application.

The JAE-IS can be accessed using their **Singpass**

Students can access the JAE website for more details on the JAE (www.moe.gov.sg/jae), SchoolFinder for details of the offerings by and previous entry score ranges for JCs and MI (www.moe.gov.sg/schoolfinder), CourseFinder for courses offered by the polytechnics and ITE, based on aggregate type and area of interest (www.moe.gov.sg/coursefinder).



Application Results

Thursday, 1 February 2024

- Short Message Service (SMS) to the Singapore mobile phone number provided by the applicant during registration
- JAE-IS, which is accessible through the JAE website



Application Results

Applicants posted to JCs and MI are to report to their posted institutions on:

Friday, 2 February 2024



Application Results

Applicants posted to polytechnics or ITE will receive an email or package via mail on the enrolment details by **end-February 2024**.



Direct School Admissions (DSA) - JC

Students who had accepted offers through the 2023 Direct School Admission – Junior Colleges (DSA-JC) will be admitted to their chosen JC if they have met the eligibility criteria for admission based on their GCE O-Level examination results.

Students admitted to a JC through DSA-JC will not be eligible to participate in the JAE.

Students who do not meet the JC admission criteria may take part in the JAE to apply for other courses which they are eligible for.



Early Admissions Exercise (EAE) – Polytechnics

Students who had earlier accepted conditional offers to a polytechnic course through the Polytechnic Early Admissions Exercise (EAE) in 2023 will have their offers confirmed and will not be eligible to participate in the JAE, if they meet the following criteria:

1. A net ELR2B2 score of 26 points or lower for the GCE O-Level examinations; and
2. Minimum Entry Requirements for the respective polytechnic courses.

Students who do not meet the above criteria may still apply for polytechnic admission via the JAE for courses which they are eligible for.



Early Admissions Exercise (EAE) – ITE

Students who had accepted conditional offers to an ITE course through the ITE EAE in 2023 and have their offers confirmed based on their GCE O-Level examination results will not be eligible to participate in the JAE.

Their EAE offers are confirmed if they meet the subject-specific Minimum Entry Requirements for the course.



Polytechnic Foundation Programme (PFP)

Students are eligible to apply for the PFP if they obtain a raw ELMAB3 aggregate of 12 points or lower and meet the subject-specific requirements for their chosen course.

PFP-eligible students who had taken GCE O-Level subjects will receive a copy of **Form P**.

Each copy of Form P contains a unique password. Interested students should use the respective passwords to submit their applications online via the PFP website at <https://pfp.polytechnic.edu.sg/PFP/index.html>.

Applications for the PFP will be open from **2.00pm on Thursday, 11 January 2024**, to **4.00pm on Tuesday, 16 January 2024**.

The PFP posting results will be released at **2.00pm on Tuesday, 23 January 2024** through the PFP website. **Students will thereafter be required to indicate whether they wish to accept, reject, or appeal for a change of course by 4.00pm on Friday, 26 January 2024.**



Direct-Entry-Scheme to Polytechnic Programme (DPP)

Eligible Secondary 4 N(A) students may submit their DPP applications online via the DPP application portal at www.ite.edu.sg/apply-for-ite-courses. Applications for the DPP will open from 12.00am on Thursday, 11 January 2024, to 11.59pm on Tuesday, 16 January 2024.

The DPP posting results for applications made under the final application phase will be released at 9.00am on Thursday, 18 January 2024 through the DPP application.



Sources of ECG Support



Restricted/Sensitive(Normal)

**CARING LEADER
THINKING CITIZEN**



What's next after my O Levels?

What if I need more guidance and assistance to make an informed decision?

Make an appointment to speak with ECG Counsellor in school or via <https://go.gov.sg/evergreenbooking2024>



Ms Li Minyi
ECG Counsellor

Tuesdays & Thursdays
@ Evergreen Secondary School
Venue: Library – ECG Room
Email: li_Minysi@moe.edu.sg



All the best for your post O Level tertiary education!

Speak to an ECG Counsellor

Making informed decisions is important for successful transition from school to further education.

(a) Speak with your teachers and ECG Counsellor in school, besides your parents, on the possible pathways.

(b) MOE ECG Centre offers online or phone counselling services to GCE O-Level students.

E-appointment system: <https://go.gov.sg/moe-ecg-centre>

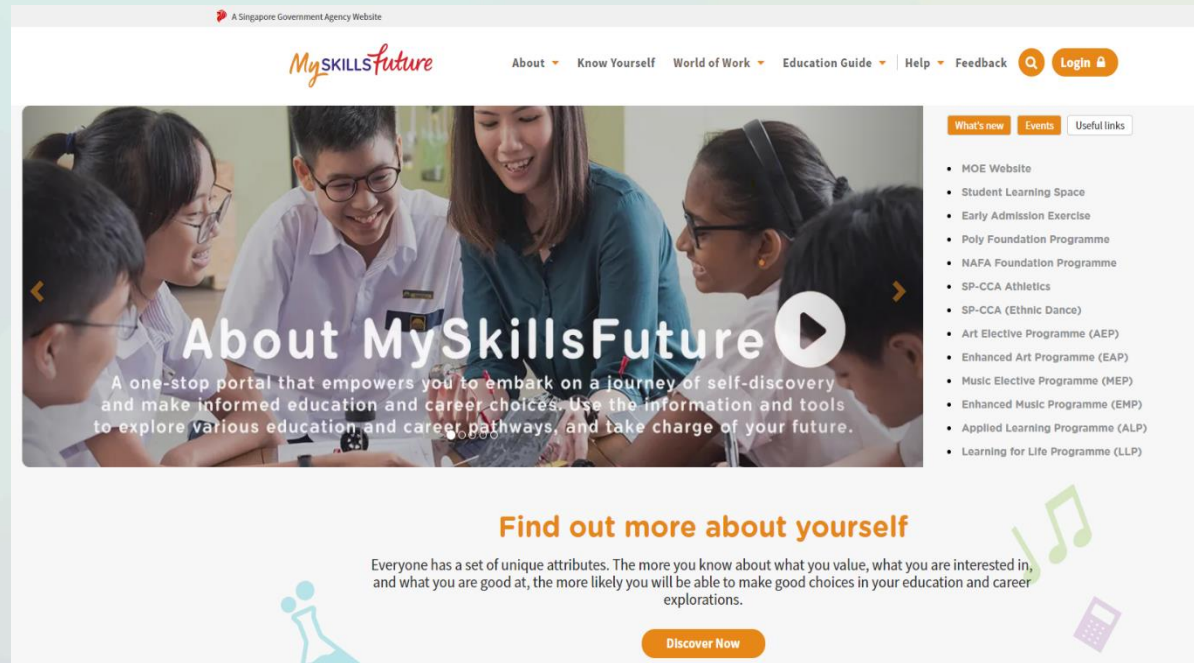
(Monday to Friday, 9 am to 6 pm, Saturday, 9 am to 1 pm)

Hotline: 68311420



MySkillsFuture Student Portal (Secondary)

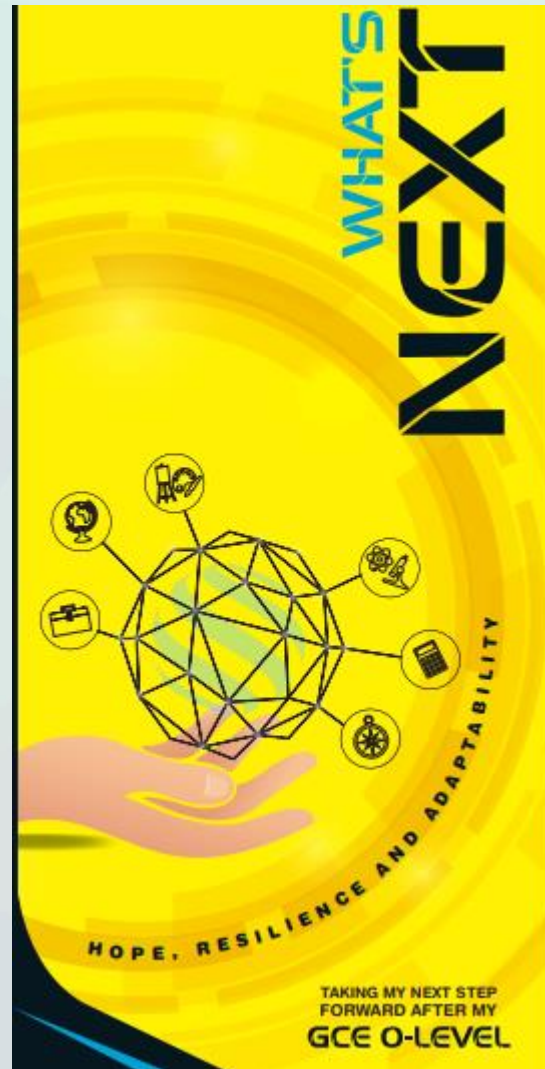
Visit <https://go.gov.sg/MySFSec> for more information.



The screenshot shows the MySkillsFuture Student Portal website. At the top, it says "A Singapore Government Agency Website". The navigation menu includes "About", "Know Yourself", "World of Work", "Education Guide", "Help", "Feedback", "Login", and a search icon. The main header features the "MySkillsFuture" logo. Below the navigation is a large banner image of students and a teacher. The banner text reads "About MySkillsFuture" with a play button icon, followed by a description: "A one-stop portal that empowers you to embark on a journey of self-discovery and make informed education and career choices. Use the information and tools to explore various education and career pathways, and take charge of your future." To the right of the banner is a "Useful links" section with a list of programs: MOE Website, Student Learning Space, Early Admission Exercise, Poly Foundation Programme, NAFA Foundation Programme, SP-CCA Athletics, SP-CCA (Ethnic Dance), Art Elective Programme (AEP), Enhanced Art Programme (EAP), Music Elective Programme (MEP), Enhanced Music Programme (EMP), Applied Learning Programme (ALP), and Learning for Life Programme (LLP). Below the banner is a section titled "Find out more about yourself" with a sub-headline: "Everyone has a set of unique attributes. The more you know about what you value, what you are interested in, and what you are good at, the more likely you will be able to make good choices in your education and career explorations." There is a "Discover Now" button and decorative icons of a person, a musical note, and a calculator.



What's Next – A Quick Guide



<https://go.gov.sg/whats-next>



On My Way (OMW)



You can find articles, videos on different professions, and connect with tertiary seniors and young professionals through sharing sessions with National Youth Council's On My Way (OMW) website.

<https://go.gov.sg/omw2022>

KNOW IT ALL COPY URL TO SHARE

INVESTMENT BANKER

Investment Bankers sell securities and provide strategic advice to their clients. They advise clients on raising funds from the equity/leebt capital markets and merger and acquisitions (M&A).

RESPONSIBILITIES

- Advise corporate clients on product offerings, private equity transactions, mergers and acquisitions, and valuations.
- Determine the **best strategy** and place to **raise debt or equity capital**.
- Prepare necessary documents to **protect the company and investor**.
- Ensure all **government regulations have been adhered to**.
- Perform financial modelling using valuation methods.

SKILLS NEEDED

HARD SKILLS	SOFT SKILLS
<ul style="list-style-type: none">Financial Modelling (e.g. DCF, Public Comps, M&A Comps)Data AnalyticsStrong Mathematical and Numerical Skills	<ul style="list-style-type: none">Influencing and negotiation skillsInnovative Problem SolvingCustomer OrientationCommunication

DAY IN THE LIFE

Explore our library of over 60 videos to get an intimate look into the daily lives of different professionals. Looking for a specific job? Use the category filter below to help you navigate the videos!

BROWSE ALL Filter By Category: #all

A Day in the Life of a Civil Engineer

Ever wondered what engineers do other than math? Join Yu Rou as she brings us into the world of a Civil Engineer!

By National Youth Council
#Engineering, #CivilEngineer

A Day in the Life of a Game Developer

What really goes on behind the scenes of games development? Learn more about what a Game Developer does!

By National Youth Council
#ComputerScience, #GamedDeveloper

A Day in the Life of a Public Relations Manager

Writing about hot topics isn't what Samantha does all the time. Let's see what she has to highlight to us!

By National Youth Council
#CommunicationandNewMedia, #PublicRelationsOfficer

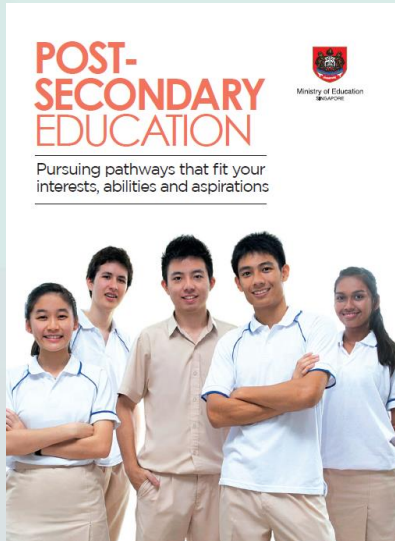
A Day in the Life of a Social Media Strategist

Social media all day every day? Find out what it's like to be a Social Media Strategist!

By National Youth Council
#CommunicationandNewMedia, #SocialMediaStrategist



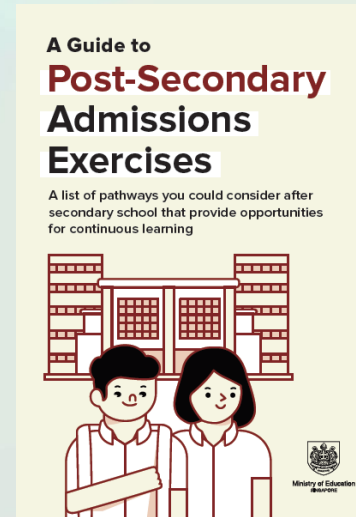
Post- Secondary Education



Post-Secondary Education booklet

Learn more about the post-secondary landscape at

<https://moe.gov.sg/post-secondary/overview>



Post-Secondary Admissions Exercises booklet

A list of pathways you could consider after secondary school

<https://moe.gov.sg/post-secondary/admissions>



Junior College/Millennia Institute

Restricted/Sensitive(Normal)

CARING LEADER
THINKING CITIZEN



Junior Colleges (JCs) & Millennia Institute

JCs and MI primarily prepare students for a tertiary education. JC students are equipped with the skills and knowledge to prepare them for the A-level examinations in 2 years, while MI students 3 years. These skills and knowledge will also **prepare students for a university education which is the main aim of an A-level education .**

Institution	Length of study	Cut-off Points
Junior College	2 years	L1R5 \leq 20
Millenia Institute	3 years	L1R4 \leq 20



What are the subjects available?

- Variety of subjects
- Check the websites of the respective JCs and MI
 - For subject combinations
 - For pre-requisites



Language Elective Programme (LEP)

The Language Elective Programme (LEP) for Chinese, Malay and Tamil aims to nurture promising students to attain a high level of language proficiency in their Mother Tongue Language (MTL) and enhance their understanding of MTL literature.

If you are interested to find out more about the programme, you can visit the various school websites.



Language Elective Programme (LEP)

In the GCE O level examination, students must obtain at least:

Grade B3 in HMT or
Grade A2 in MT



Polytechnics

Restricted/Sensitive(Normal)

**CARING LEADER
THINKING CITIZEN**



Polytechnics



Nanyang Polytechnic



Ngee Ann Polytechnic



Republic Polytechnic



Singapore Polytechnic



Temasek Polytechnic

Courses are **hands-on** and focus on **preparing students for work**

Students **graduate with a Diploma in specific area of study.**



Entry into Polytechnic

Through the Joint Admissions Exercise (**JAE**)

ELR2B2 is used for admissions into the polytechnics.

- English Language
- 2 RELEVANT subjects for the course applied for
- 2 other best subjects

Students must also meet the minimum entry requirements for the course they want to pursue.



Arts Institutions

Restricted/Sensitive(Normal)

CARING LEADER
THINKING CITIZEN



Arts Institutions

Courses are **hands-on** with a focus in **the visual and performing arts** (e.g. Design, Animation, Fine Arts, Media, Dance, Music)



Students **graduate with a Diploma.**



Apply directly to your institution of interest.



The Nanyang Academy of Fine Arts



Find out more: :

Website: www.nafa.edu.sg/admissions

Length of study

3 years

Considerations for Entry

- ✓ English language proficiency: Grade C6 or better in GCE O Level English*
- ✓ 25 points or better in 4 GCE O Level subjects, excluding English

NAFA virtual Open house via nafaopenhouse.vfairs.com.

*For Diploma in Dance and Diploma in Music, the minimum English grade required is D7. Restricted/Sensitive(Normal)



The LASALLE College of the Arts



Find out more :

Website: www.lasalle.edu.sg/admissions

Length of study

3 years

Entry Requirements:

- ✓ 25 points or better in 4 GCE O Level subjects excluding English and a pass in English (C6 or higher)
- ✓ Audition/Portfolio/Audition and Interview

Institute of Technical Education

Restricted/Sensitive(Normal)

**CARING LEADER
THINKING CITIZEN**



Institute of Technical Education (ITE)



For students
with an aptitude for
hands-on learning

**National
ITE Certification
(*Nitec*)**

**Higher National
ITE Certification
(*Higher Nitec*)**

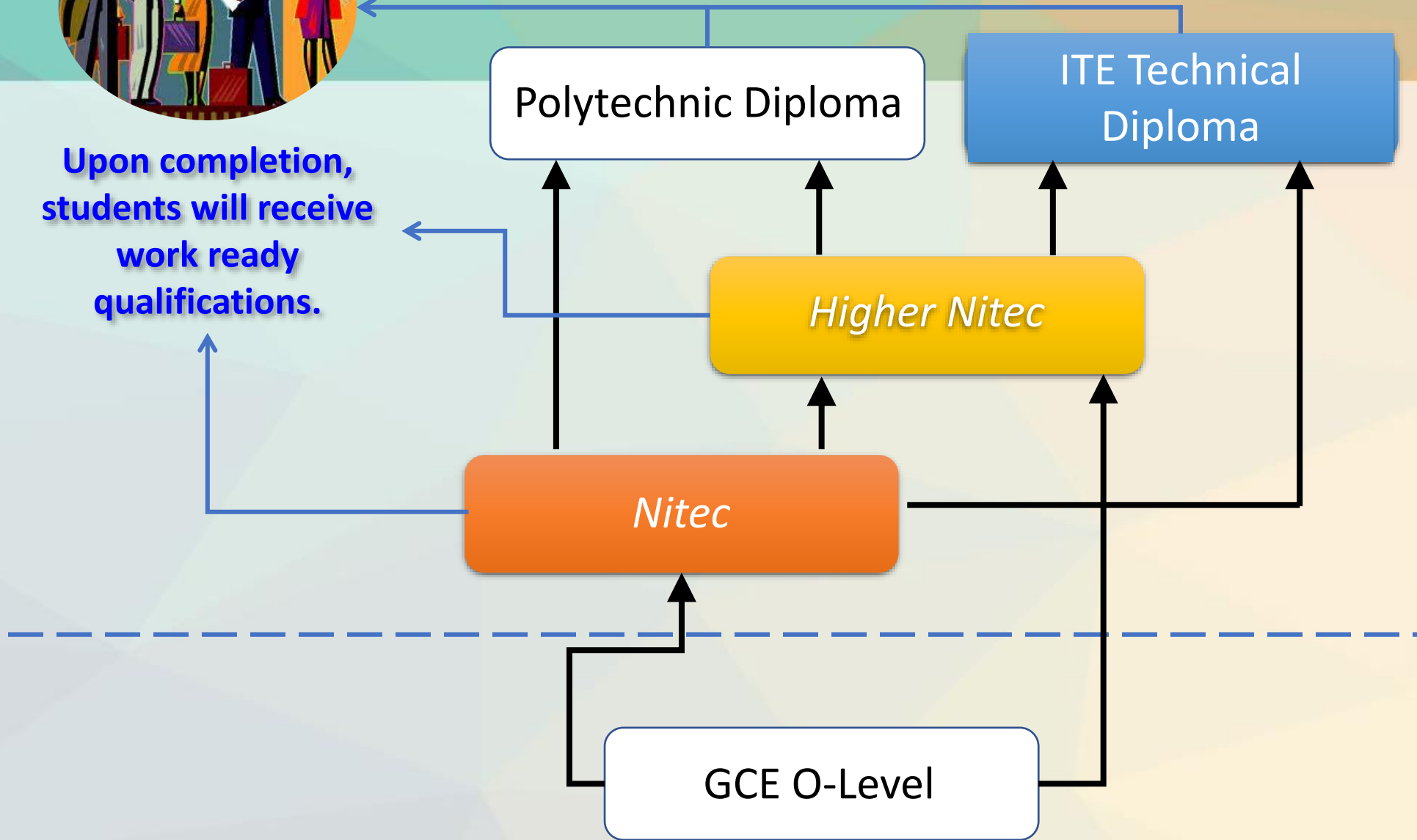
Restricted/Sensitive(Normal)





General Overview

Upon completion, students will receive work ready qualifications.



Summary of Admissions Applications

GCE O Level certificate holders can apply through the Joint Admissions Exercise (**JAE**), for admission to courses offered by:

- **Junior Colleges (JC)**
- **Millennia Institute (MI)**
- **Polytechnics (Poly)**
- **Institute of Technical Education (ITE).**

For O Level holders who wish to apply to **Arts Institutions**, they can **apply directly to the institutions.**



For Students Planning for Private Education

Restricted/Sensitive(Normal)

CARING LEADER
THINKING CITIZEN



Planning for Private Education - The 3Rs when deciding on Private Education

Reasons

Why are you
furthering your
studies?

Readiness

How ready are
you to further
your studies?

Risks

Do you know
the possible
drawbacks?

<https://go.gov.sg/pei-studentresources>



8 Things You Should Know Before You Enroll in A Private School

School Registration



Ensure the school is registered with CPE. Review the school's registration period, expiry date and its overall registration track record.

Partner Institution



Research on the partner institution conferring the diploma or degree, and whether the qualification is recognised by the industry.

EduTrust Certification Scheme

Is the school EduTrust-certified*? Under the scheme, private schools are assessed for their performance in areas such as school management and provision of student support services.



**Schools are required to obtain EduTrust certification in order to offer external degree programmes*

School Premises

Head down to the campus ground to check the facilities and support services. Observe the study environment too.



Fee Protection



Ask if there is any course fee protection so that you will be able to recover unconsumed course fees should the school close down.

Beyond Course fees



Find out about the course syllabus and materials, graduation rates and employment prospects. Approach the alumni to find out what they think of the school.

Teachers

Check if the teachers are qualified to teach the course.



Internship

If industry attachment is included, find out which organisation you will be attached to, the period of attachment and the alternative arrangement should the attachment become unavailable. Verify the information with the organisation as well.



IMPORTANT INFORMATION FOR ALL STUDENTS

Restricted/Sensitive(Normal)

**CARING LEADER
THINKING CITIZEN**



Important Information for all students - Amendment to Certificate

- a) Please check that the names printed in your certificate is correct.
- b) You may request for a re-print of your certificate only if your name is printed wrongly due to misspelling.
- c) Amendment fee of **\$50** for each certificate.
- d) Request must be submitted to SEAB by **17 January 2024**.



Important Information for all students - Appeal for Review of Results

- a) Per Appeal Per Subject --- **\$114.45**
- b) Strong reasons for Appeal of Results.
- c) All appeals must be supported by the School Leader and submitted through the school.
- d) Closing date for submission of appeals including payment of appeal fees is by Wednesday, **17 Jan 2024.**



Release of O Level Results

TODAY, you will get:

- 1. Result Slip & Certificate** (Please check the personal particulars printed on your examination certificates. There will be an administration fee of \$50 payable for any request to amend an examination certificate. All requests have to be submitted by **17 Jan 2024.**)
- 2. CCA Certificate** (Please check the details and you can approach Mr James Ng if there any request to amend the CCA Certificate. You can email him at james_ng_aik_gian@moe.edu.sg)
- 3. Form P (PFP)**



EVERGREEN SECONDARY SCHOOL

Release of O-Level Results 2023

Restricted/Sensitive(Normal)

CARING LEADER
THINKING CITIZEN



EVERGREEN SECONDARY SCHOOL

GCE O-LEVEL RESULTS 2023

Sec 4 Eligibility Rate

JC/MI

90.7%

Poly

98.7%



EVERGREEN SECONDARY SCHOOL

GCE O-LEVEL RESULTS 2023

Sec 5 Eligibility Rate

JC/MI

37.5%

Poly

81.3%



GCE O-Level Results 2023

SEC FOUR

LEVEL	5 or more O-Level Passes
4	93.4%



GCE O-Level Results 2023

SEC FIVE

LEVEL	5 or more O-Level Passes	3 or more O-Level Passes
5	62.5%	93.8%



**We wish each and everyone of you
the best in your future endeavours!**



Congratulations!